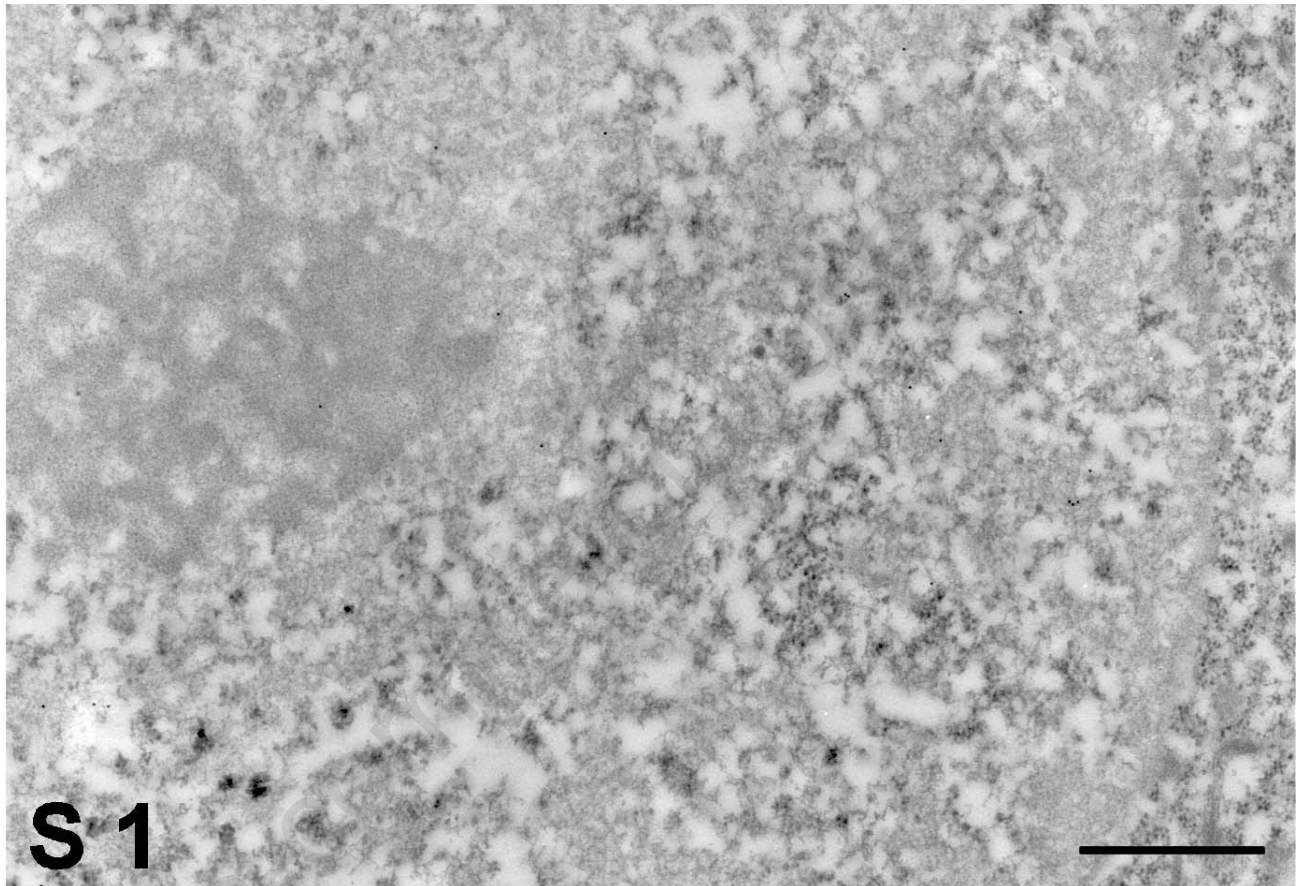


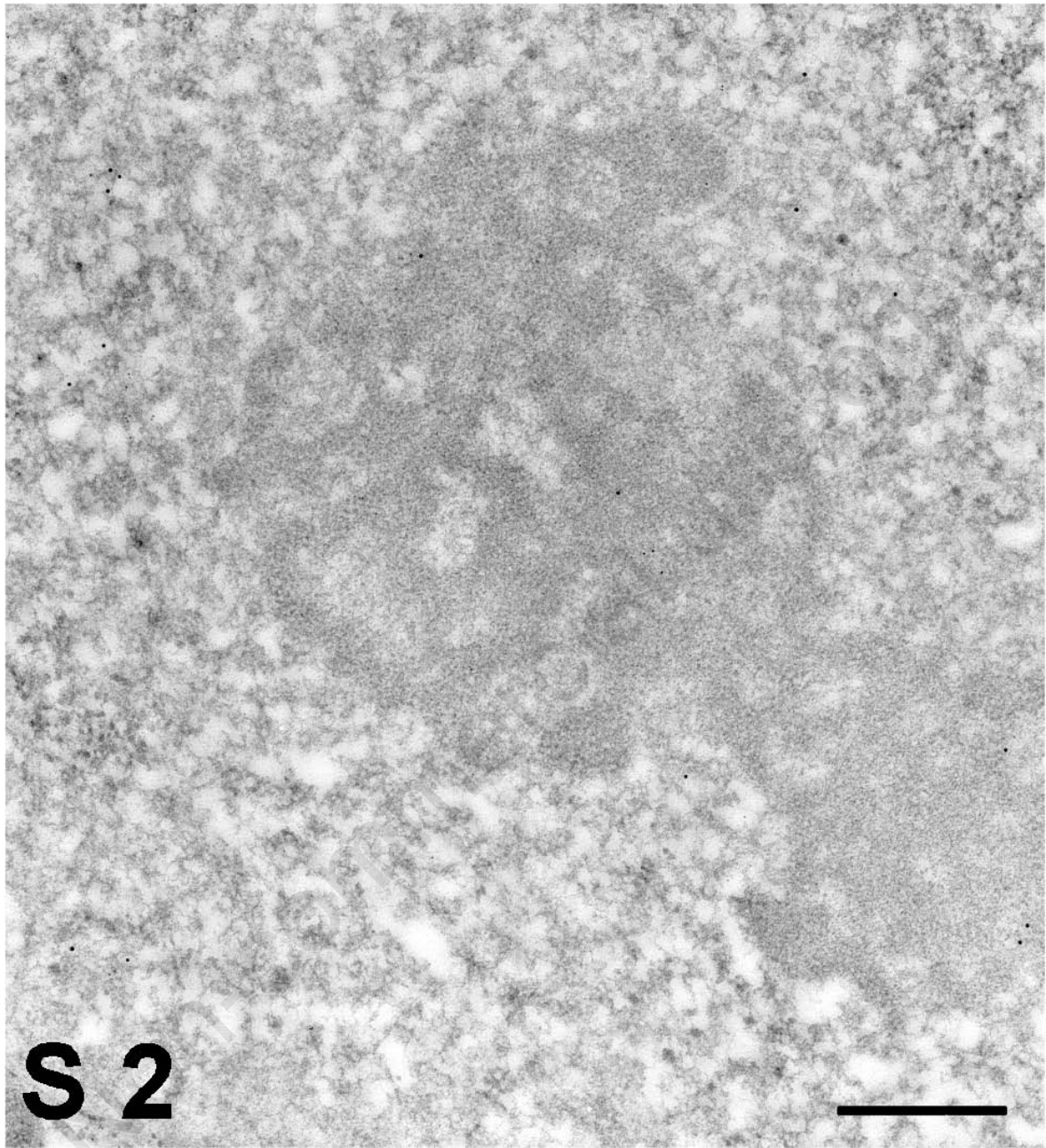
Unexpected distribution of KRIT1 inside the nucleus: new insight in a complex molecular pathway

S. Marzo, V. Galimberti, M. Biggiogera

Supplementary Figures



Supplementary Figure 1. KRIT1 labeling pattern after EDTA staining, as in Fig. 1a. The gold particles are not highlighted; scale bar: 500 nm.



Supplementary Figure 2. Nucleolus of a HeLa cell nucleus. KRIT1 is present in the dense fibrillar component surrounding the fibrillar center. Terbium staining. Gold grains are not highlighted; scale bar: 500 nm.