



European Journal of Histochemistry

SUPPLEMENTARY MATERIAL

DOI: [10.4081/ejh.2022.3330](https://doi.org/10.4081/ejh.2022.3330)

α 2,3 sialic acid processing enzymes expression in gastric cancer tissues reveals that ST3Gal3 but not Neu3 are associated with Lauren's classification, angiolymphatic invasion and histological grades

Michael W.L. Quirino,^{1*} Amanda P.B. Albuquerque,^{1*}
Maria F.D. de Souza,¹ Antônio F. da Silva Filho,¹ Mário R. Martins,²
Maira G. da Rocha Pitta,¹ Michelly C. Pereira,¹ Moacyr J.B. de Melo Rêgo¹

¹Laboratory of Immunomodulation and New Therapeutical Approaches, Research Centre for Therapeutic Innovation Suely Galdino (NUPIT-SG), Federal University of Pernambuco, Recife, PE

²Pernambuco Cancer Hospital-HCP, Recife, PE, Brazil

**These authors contributed equally*

Correspondence: Moacyr Jesus Barreto de Melo Rêgo, Laboratory of Immunomodulation and New Therapeutical Approaches, Institute/University/Hospital: Research Centre for Therapeutic Innovation Suely Galdino (NUPIT-SG), Federal University of Pernambuco, Av. Prof. Moraes Rego 1235, Cidade Universitária, Recife, PE 50670-901, Brazil. E-mail: moacyr.rego@ufpe.br

Key words: Neuraminidase 3; primary gastric cancer; ST3 beta-galactoside alpha-2,3-sialyltransferase 3.

Note: The publisher is not responsible for the content or functionality of any supporting information supplied by the authors. Any queries should be directed to the corresponding author for the article.

Supplementary Table 1. Clinicopathological parameters of patients with gastric adenocarcinoma.

Clinicopathological parameters	N° of patients (%)	total n=71
Age		
≥60 years	36(50.70)	
<60 years	35(50.69)	
Sex		
Male	47(66.19)	
Female	24(33.80)	
Surgery type		
Total gastrectomy	32(54.79)	
Partial gastrectomy	39(49.29)	
Initial treatment		
I	66(92.95)	
III	5(7.04)	
Surgical staging (TNM)		
I and II	19(26.76)	
III and IV	52(73.23)	
Lymph node involvement		
Yes	46(64.78)	
No	25(35.21)	
Histological grade		
GI + GII	35(49.29)	
GIII	36(50.71)	
Chemotherapy		
Yes	39(54.92)	
No	32(45.07)	
Radiotherapy		
Yes	22(30.98)	
No	49(69.01)	
Recurrence		
Yes	16(22.53)	
No	55(77.46)	
Lauren's classification		
Diffuse	33(48.52)	
Intestinal	35(51.47)	
Angiolymphatic invasion		
Detected	29(43.28)	
Not detected	38(56.71)	
<i>H. pylori</i> infection		
Positive	9(13.63)	
Negative	57(86.36)	

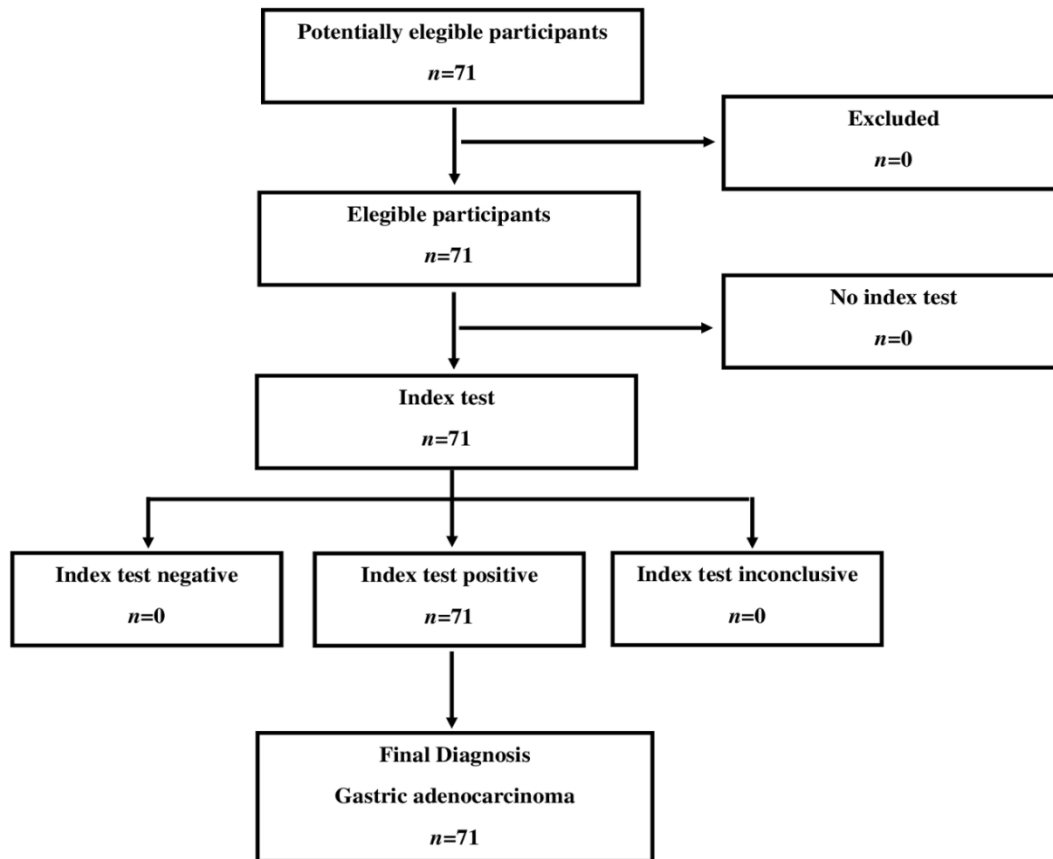
Lauren's classification, N-68; Angiolymphatic invasion, N-67; *H. pylori* infection N-66

Supplementary Table 2. Paired comparison of ST3Gal3 staining in non-tumor, neoplastic and metaplasia adjacent gastric tissue.

	Non-tumor	Neoplastic	Metaplasia	p
ST3GAL3 ⁽⁺⁾	8	18	7	0.5975
ST3GAL3 ⁽⁻⁾	27	53	13	

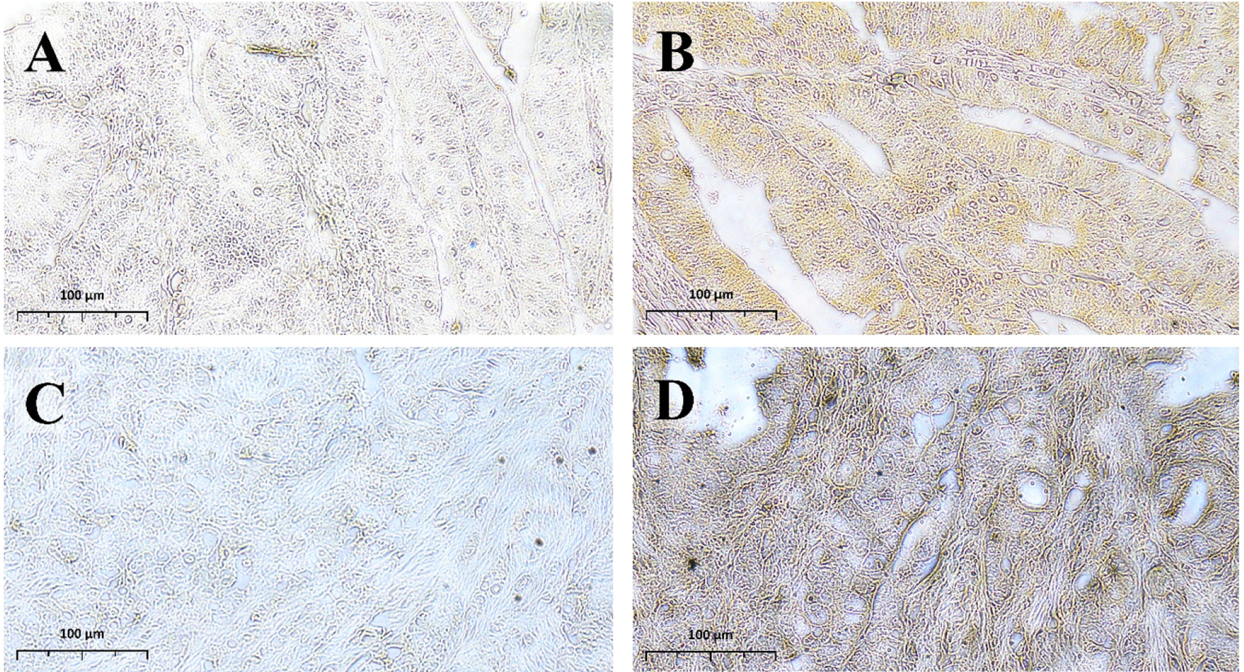
Supplementary Figure 1.

STARD diagram to report flow of participants through the study.



Supplementary Figure 2.

Neu3 and ST3Gal3 staining at the control. Neu3 staining negative (A) and positive (B) at the colon cancer tissue. ST3Gal3 staining negative (C) and positive (D) in adeno prostate cancer tissue.



Supplementary Figure 3.

ST3Gal3 expression and survival analysis.

