

## Erratum - Analysis of extracellular superoxide dismutase and Akt in ascending aortic aneurysm with tricuspid or bicuspid aortic valve

A. Arcucci,<sup>1</sup> M.R. Ruocco,<sup>2</sup> F. Albano,<sup>1,2</sup>  
G. Granato,<sup>1,2</sup> V. Romano,<sup>1</sup> G. Corso,<sup>3</sup>  
C. Bancone,<sup>4</sup> E. De Vendittis,<sup>2</sup>  
A. Della Corte,<sup>4</sup> S. Montagnani<sup>1</sup>

<sup>1</sup>Department of Public Health, University of Naples Federico II

<sup>2</sup>Department of Molecular Medicine and Medical Biotechnologies, University of Naples Federico II

<sup>3</sup>Department of Clinical and Experimental Medicine, University of Foggia

<sup>4</sup>Department of Cardiothoracic Sciences, Second University of Naples, Italy

This corrects the articles published on European Journal of Histochemistry 2014; 58:200-206 doi: 10.4081/ejh.2014.2383, where we have observed that the legends of Figure 2 and Figure 3 were not correctly reported.

The correct legends of Figure 2 and Figure 3 have to be considered as below presented.

Correspondence: Prof. Stefania Montagnani, Department of Public Health, University of Naples Federico II, via S. Pansini 5, 80131 Naples, Italy.

Tel. +39.081.7463421.

E-mail: montagna@unina.it

This work is licensed under a Creative Commons Attribution NonCommercial 3.0 License (CC BY-NC 3.0).

©Copyright A. Arcucci et al., 2015

Licensee PAGEPress, Italy

European Journal of Histochemistry 2015; 59:2517

doi:10.4081/ejh.2015.2517

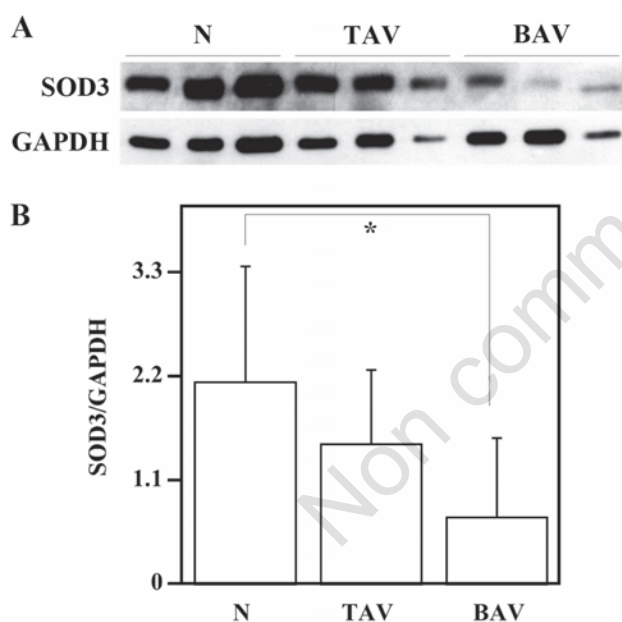


Figure 2. Analysis of SOD3 protein levels in the ascending aortic wall. Western blotting analysis, for SOD3 protein levels evaluation, was performed on ascending aorta protein extracts from six nonaneurysmal aortas (N), nine patients with AsAA associated to TAV and nine patients with AsAA associated to BAV (A); GAPDH was used as loading control. Representative image is shown. Densitometric analysis of SOD3 protein levels (B). Data are reported as mean  $\pm$  SD.  $P < 0.05$ .

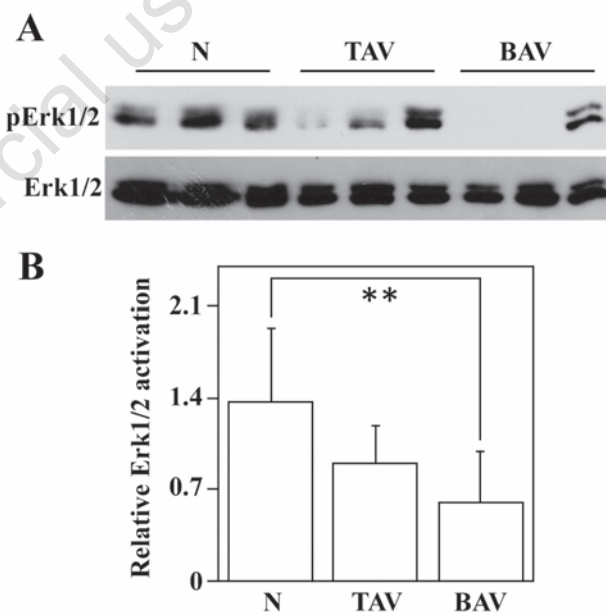


Figure 3. Analysis of Erk1/Erk2 phosphorylation in the ascending aortic wall. Western blotting analysis, to evaluate pErk1/Erk2 protein levels, was performed on ascending aorta protein extracts from six nonaneurysmal aortas (N), nine patients with AsAA associated to TAV and nine patients with AsAA associated to BAV (A); the samples were normalized with total Erk1/Erk2. Representative image is shown. Densitometric analysis of pErk1/Erk2 protein levels (B). Relative Erk1/Erk2 activation represents the ratio between the densities of pErk1/2 and Erk1/2 bands. Data are reported as mean  $\pm$  SD.  $**P < 0.01$ .