

DOI: [10.4081/ejh.2018.2931](https://doi.org/10.4081/ejh.2018.2931)

### GalNAc-T15 in gastric adenocarcinoma: Characterization according to tissue architecture and cellular location

Mário S. de Souza Albuquerque,<sup>1\*</sup> Antônio F. da Silva Filho,<sup>1\*</sup>  
Marina Ferraz Cordeiro,<sup>1</sup> Maria de Fátima Deodato de Souza,<sup>1</sup> Michael W. L. Quirino,<sup>1</sup>  
Luiza R. Amorim Lima,<sup>2</sup> Maira G. da Rocha Pitta,<sup>1</sup> Mário R. Martins,<sup>3</sup>  
Moacyr J. B. de Melo Rêgo<sup>1</sup>

<sup>1</sup>Laboratório de Imunomodulação e Novas Abordagens Terapêuticas, Núcleo de Pesquisa em Inovação Terapêutica Suely Galdino, Universidade Federal de Pernambuco, Recife

<sup>2</sup>Universidade de Pernambuco, Campus Garanhuns

<sup>3</sup>Hospital do Câncer de Pernambuco, Recife, Brazil

**Correspondence:** Moacyr Jesus Barreto de Melo Rêgo, Laboratório de Imunomodulação e Novas Abordagens Terapêuticas (LINAT), Núcleo de Pesquisa em Inovação Terapêutica Suely Galdino (NUPIT-SG), Universidade Federal de Pernambuco, Av. Prof. Moraes Rego 1235, Cidade Universitária, Recife, PE 50670-901, Brazil. E-mail: [moacyr.rego@gmail.com](mailto:moacyr.rego@gmail.com)

**Key words:** Gastric adenocarcinoma; polypeptide N-acetylgalactosaminyltransferases; clinical-pathological analyses; immunohistochemistry.

---

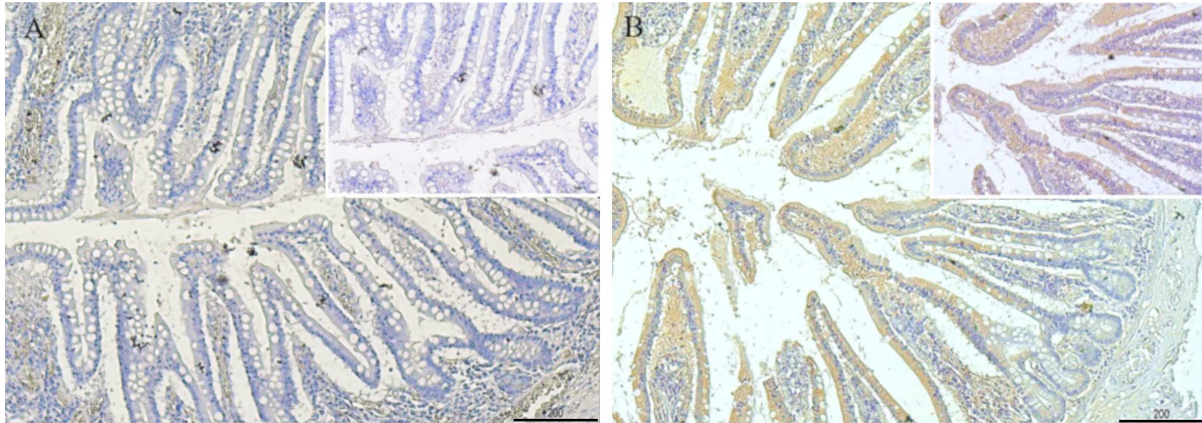
**Supplementary Table 1.** Immunoreactivity staining evaluation

% of positive cells	Color intensity reaction	Staining classification (% of positive cells x color reaction)
1= <10% of + cells	0 = no color	Negative: 0 to 1 points
2= 10-50% of + cells	1 = mild reaction	Weak: 2 to 3 points
3= 51-80% of + cells	2 = moderate reaction	Intermediate: 4 to 8 points
4= >80% of + cells	3 = intense reaction	Strong: 9 to 12 points

**Supplementary Table 2.** Paired comparison of ppGalNAc-T15 staining in neoplastic cells and gastric non-transformed adjacent tissue.

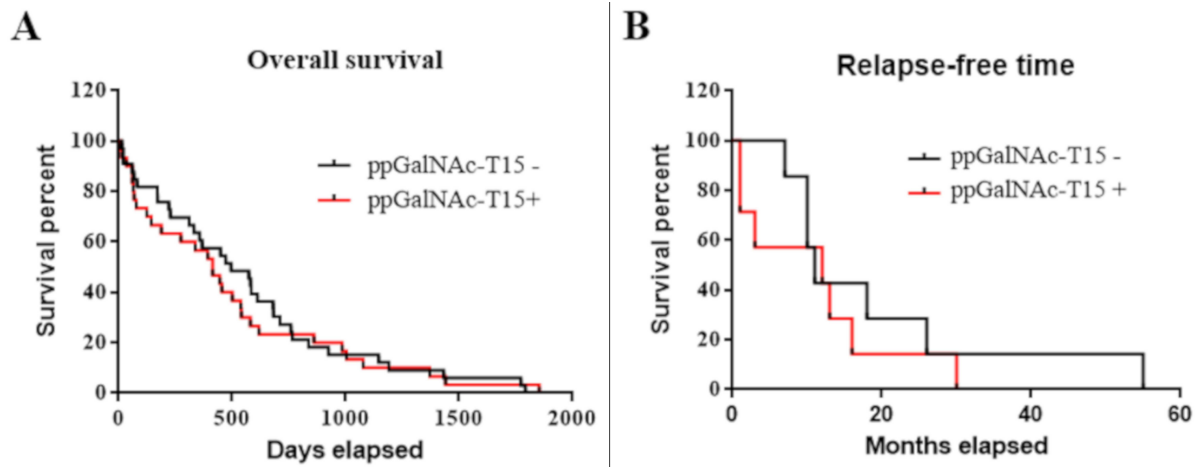
	Neoplastic		P value
Non-cancerous	ppGalNAc-T15 <sup>(+)</sup>	ppGalNAc-T15 <sup>(-)</sup>	
ppGalNAc-T15 <sup>(-)</sup>	01 (3.03)	09 (27.27)	0.2166
ppGalNAc-T15 <sup>(+)</sup>	08 (24.24)	15 (45.45)	

In most of the cases (15) when the normal adjacent tissue was positive to ppGalNAc-T15 the neoplastic one was negative. In 9 cases the enzyme staining was absent in neoplastic and normal tissue and in 8 cases positive for both tissues. Only 1 sample was positive in neoplastic area and negative in normal.



**Supplementary Figure 1.**

ppGalNac-T15 staining of controls. Negative (A) and positive control (B). Scale bar: 200 μm.



**Supplementary Figure 2.**

Graphs of outcome parameters according to ppGalNac-T15 staining. A) Overall survival in days. B) Recurrence-free time in months.