

DOI: [10.4081/ejh.2021.3214](https://doi.org/10.4081/ejh.2021.3214)

Tripartite motif-containing protein 6 facilitates growth and migration of breast cancer through degradation of STUB1

Chuanhao Wei,^{1#} Jiayue Wu,^{2#} Weiyang Liu,¹ Jingfeng Lu,¹ Hongchang Li,¹
Benjun Hai¹

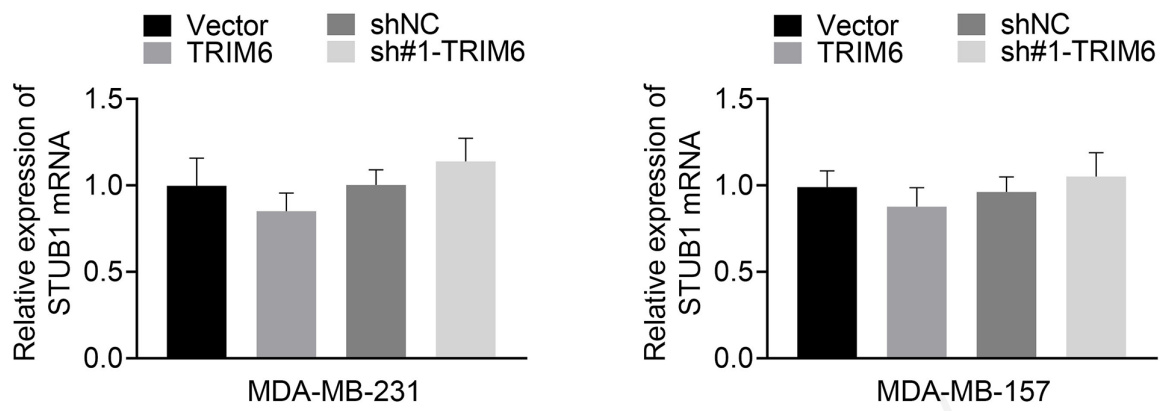
[#]These authors contributed equally

¹Department of General Surgery, Institute of Fudan-Minhang Academic Health System, Minhang Hospital, Fudan University, Shanghai

²Department of Special Ward One, Shanghai Pulmonary Hospital, Shanghai, China

Correspondence: Benjun Hai, Department of General Surgery, Institute of Fudan-Minhang Academic Health System, Minhang Hospital, Fudan University, No. 170 Xinsong Road, Shanghai City, China. Tel. +86.021.64923400. E-mail: licchong1@163.com

Key words: TRIM6; STUB1; ubiquitination; breast cancer; growth, migration.



Supplementary Figure 1.

Effect of TRIM6 on mRNA expression of STUB1 in MDA-MB-231 and MDA-MB-157 cells.

Non-commercial use only