

## Differential antigen expression between human apocrine sweat glands and eccrine sweat glands

Manxiu Cao,<sup>1\*</sup> Lei Zhang,<sup>2\*</sup> Jiaqi Cheng,<sup>1\*</sup> Cangyu Wang,<sup>1</sup> Junhong Zhao,<sup>1</sup> Xiang Liu,<sup>1</sup> Yongjing Yan,<sup>1</sup> Yue Tang,<sup>1</sup> Zixiu Chen,<sup>1</sup> Haihong Li<sup>1,3</sup>

*\*These authors contributed equally to this work.*

<sup>1</sup>Department of Wound Repair and Dermatologic Surgery, Taihe Hospital, Hubei University of Medicine, Shiyan, Hubei

<sup>2</sup>Department of Mental Health, Southern University of Science and Technology Hospital, Southern University of Science and Technology School of Medicine, Shenzhen, Guangdong

<sup>3</sup>Department of Wound Repair; Institute of Wound Repair and Regeneration Medicine, Southern University of Science and Technology Hospital, Southern University of Science and Technology School of Medicine, Shenzhen, Guangdong, China

### ABSTRACT

Bromhidrosis has a great negative impact on personal occupation and social psychology. It is not yet clear whether bromhidrosis is caused by apocrine sweat glands or the co-action of apocrine sweat glands and eccrine sweat glands. To distinguish between apocrine sweat glands and eccrine sweat glands, specific antigen markers for apocrine sweat glands and eccrine sweat glands must be found first. In the study, we detected the expression of keratin (K) 7, K18, K19, Na<sup>+</sup>-K<sup>+</sup>-2Cl<sup>-</sup> cotransporter 1 (NKCC1), carbonic anhydrase II (CAII), Forkhead transcription factor a1 (Foxa1), homeobox transcription factor engrailed homeobox 1 (En1), gross cystic disease fluid protein-15 (GCDFP-15), mucin-1 (MUC-1), cluster of differentiation 15 (CD15) and apolipoprotein (APOD) in eccrine sweat glands and apocrine sweat glands by immunofluorescence staining. The results showed that K7, K18, K19, Foxa1, GCDFP-15 and MUC-1 were expressed in both apocrine and eccrine sweat glands, CD15 and APOD were only expressed in apocrine sweat glands, and CAII, NKCC1 and En1 were only expressed in eccrine sweat glands. We conclude that CD15 and APOD can serve as specific markers for apocrine sweat glands, while CAII, NKCC1 and En1 can serve as specific markers for eccrine sweat glands to differentiate the two sweat glands.

**Key words:** Apocrine sweat glands; eccrine sweat glands; human; differential markers; immunofluorescence.

**Correspondence:** Prof. Haihong Li, Department of Wound Repair and Dermatologic Surgery, Taihe Hospital, Hubei University of Medicine, 32 South Renmin Road, Shiyan 442000, Hubei, China.  
E-mail: lihaihong1051@126.com

**Contributions:** All authors contributed to the study concept and design. MC, LZ, JC, performed experiments and wrote the first draft of the manuscript; CW, JZ, XL, handled data; HL, supervised the project and analysed data; YY, YT, ZC, supervised the project, handled data. All authors read and commented the manuscript, approved its final version, and agreed to be accountable for all aspects of the work.

**Funding:** The manuscript was supported in part by the National Natural Science Foundation of China (82172231, 82172211, 81830064).

**Conflict of interest:** The authors declare that they have no competing interests, and all authors confirm accuracy.

**Ethical approval:** Ethical permission was granted by the Ethics Committee of Hubei University of Medicine, and informed consents were obtained from patients or their guardians.

## Introduction

Apocrine and eccrine sweat glands are two types of sweat glands distributed close to each other in the region of axillary area.<sup>1</sup> Bromhidrosis has a significant impact on personal occupation and social psychology.<sup>2</sup> So far, it is not clear whether bromhidrosis is caused by apocrine sweat glands or the co-action of apocrine sweat glands and eccrine sweat glands. Some studies showed that the characteristic odor of bromhidrosis was caused only by the apocrine glands, as the number of apocrine glands was increased compared to normal people, while the eccrine glands were unchanged.<sup>1,3,4</sup> However, some studies considered that the special odor was the result of the co-action of apocrine sweat glands and eccrine sweat glands for that the bromhidrosis had a higher density of eccrine and apocrine sweat glands.<sup>5,6</sup> Therefore, to clarify the issue, we must first find reliable markers to distinguish between apocrine sweat glands and eccrine sweat glands.

Apocrine sweat glands and eccrine sweat glands are different in the distribution, structure and function.<sup>7-10</sup> In humans, apocrine sweat glands are mainly distributed in the axillae, ear canal, breast, eyelid, inguinal and perineal, and are associated with hair follicles.<sup>5,7,11</sup> Apocrine sweat glands are present at birth and do not become active until puberty, but little is known about their function in humans.<sup>5,7,11</sup> In contrast, the eccrine sweat glands are distributed almost all over the body, independence of hair follicles, and are active from birth.<sup>7,8,10</sup> The main function of eccrine sweat glands is to regulate body temperature in hot environments or during physical exercise.<sup>7,8,10</sup>

Morphologically, the ducts of the two glands are roughly similar and difficult to distinguish, while the secretory coils of the apocrine sweat glands and the eccrine sweat glands are different.<sup>6,9,12</sup> Generally, the lumens of the apocrine secretory coils are larger, while the lumens of the eccrine secretory coils are smaller.<sup>7,8,10</sup> Apocrine secretory coils have variable appearances in tissue sections, making it sometimes difficult to distinguish apocrine and eccrine sweat glands. In this study, we detected the reported apocrine and eccrine sweat gland markers keratin (K) 7, K18, K19, Na<sup>+</sup>-K<sup>+</sup>-2Cl<sup>-</sup> cotransporter 1 (NKCC1), carbonic anhydrase II (CAII), Forkhead transcription factor a1 (Foxa1), homeobox transcription factor engrailed homeobox1 (En1), gross cystic disease fluid protein-15 (GCDFP-15), mucin-1 (MUC-1), cluster of differentiation 15 (CD15) and apolipoprotein (APOD) by immunofluorescence to find specific markers to differentiate apocrine sweat glands from eccrine sweat glands.

## Materials and Methods

### Skin samples

Eight finger skin samples and eight axillary skin samples were used. Finger skin samples were obtained from 3- to 26-year-old individuals undergoing polydactylectomy, and axillary skin samples were obtained from 3- to 30-year-old individuals undergoing axillary surgery unrelated to axillary apocrine glands in Department of Wound Repair and Dermatologic Surgery, Taihe Hospital, Hubei University of Medicine. Ethical permission was granted by the Ethics Committee of Hubei University of Medicine, and informed consents were obtained from patients or their guardians. The samples were fixed in 4% paraformaldehyde, paraffin-embedded and cut into 5 μm-thick sections.

### Hematoxylin and eosin (H&E) staining

The sections were dewaxed in xylene, rehydrated through grades of alcohol (100%, 95%, 85% and 75%) to double distilled water, stained in H&E and mounted in resin.

### Immunofluorescence staining

The sections were routinely deparaffinized and hydrated, and then the sections were heated to 95°C in Tris-EDTA buffer (pH 9.0) for 15 min for antigen retrieval. Subsequently, the sections were incubated with 1% bovine serum albumin (BSA) in phosphate-buffered saline (PBS) for 30 min at 37°C to block nonspecific sites. Third, the sections were incubated respectively with different primary antibodies (data on the primary antibodies are described in Table 1) at 4°C overnight, followed by incubation with Cy3-labeled goat anti-rabbit IgG (H + L) (A0516, Beyotime, Jiangsu, China) for rabbit-derived primary antibodies, Cy3-labeled goat anti-mouse IgG (H+L) (A0521, Beyotime) for mouse-derived primary antibodies, or Cy3-labeled donkey anti-goat IgG (H+L) (A0502, Beyotime) for goat-derived primary antibody, at room temperature in the dark at 1:500 dilution for 1 h. Finally, the sections were counterstained with 4', 6-diamidino-2-phenylindole (DAPI; Beyotime) for 2 min at room temperature in the dark and mounted with anti-fade mounting medium (P0128, Beyotime). PBS was used for rinsing between steps. Sections omitting the primary antibodies or using normal serum of the same species as the primary antibodies were used as negative controls.

## Results

### Typical eccrine sweat glands could be easily differentiated from apocrine sweat glands morphologically

In axillary skin, apocrine sweat glands and eccrine sweat glands were both located in the dermis of the axillary skin (Figure 1A). The lumens of apocrine secretory coils (Figure 1A,A1) were obviously larger than those of eccrine secretory coils (Figure 1A, A2). In fingers, there were only eccrine sweat glands, and most of the eccrine sweat glands were located in the deep part of the dermis and the upper part of the subcutaneous tissue (Figure 1B). The morphology of the eccrine sweat glands in the finger skin was similar to that in the axillary skin, with a small lumen (Figure 1 A,B).

**Table 1. Primary antibodies used.**

Primary antibodies	Source	Dilution
Mouse anti- CD15 (ab241552)	Abcam, UK	1:200
Rabbit anti- APOD (Ab108191)	Abcam, UK	1:200
Mouse anti- CAII (sc-133111)	Santa Cruz, USA	1:50
Goat anti- NKCC1 (sc-21545)	Santa Cruz, USA	1:200
Rabbit anti- En1 (HPA073141)	Atlas, Sweden	1:50
Rabbit anti- MUC-1 (ab109185)	Abcam, UK	1:250
Rabbit anti- GCDFP-15 (ab133290)	Abcam, UK	1:200
Rabbit anti- K7 (ab181598)	Abcam, UK	1:1000
Rabbit anti- K18 (ab181597)	Abcam, UK	1:500
Rabbit anti- K19 (Ab52625)	Abcam, UK	1:500
Rabbit anti- Foxa1 (ab170933)	Abcam, UK	1:1000

APOD, apolipoprotein D; CAII, carbonic anhydrase II; NKCC1, Na<sup>+</sup>-K<sup>+</sup>-2Cl<sup>-</sup> cotransporter 1, EN1, Homeobox transcriptional factor engrailed homeobox1; GCDFP-15, gross cystic disease fluid protein-15; Foxa1, Forkhead transcription factor A1.

### CD15 and APOD were specific markers of apocrine sweat glands

The expression and localization of all detected antigens were consistent in all skin samples. Negative controls did not show non-specific binding and false positive results (Figure 2C1-3). CD15 was positive in the apocrine sweat glands (Figure 2A1; Table 2), while was negative in the eccrine sweat glands (Figure 2A2,A3; Table 2). APOD showed a strong reaction in the apocrine sweat glands (Figure 2B1; Table 2), but showed an absence of staining in the eccrine sweat glands (Figure 2B2,B3; Table 2).

### CAII, NKCC1 and En1 were specific markers of eccrine sweat glands

CAII (Figure 3A1-3) and NKCC1 (Figure 3B1-3) stained the cell membrane and cytoplasm, and En1 (Figure 3C1-3) stained the nucleus. CAII was strongly expressed in the eccrine sweat glands (Figure 3A2, 3A3; Table 2), but was not expressed in the apocrine sweat glands (Figure 3A1; Table 2). NKCC1 showed almost no staining in the apocrine sweat glands (Figure 3B1; Table 2), while showed positive staining in the eccrine sweat glands (Figure 3B2,B3; Table 2). En1 immunoreactivity (Figure 3C1-3; Table 2) was found in the eccrine sweat glands (Figure 3C2,C3; Table 2), but not in the apocrine sweat glands (Figure 3C1; Table 2).

### MUC-1, GCDFP-15, K7, K18, K19 and Foxa1 were the common antigens of apocrine and eccrine sweat glands

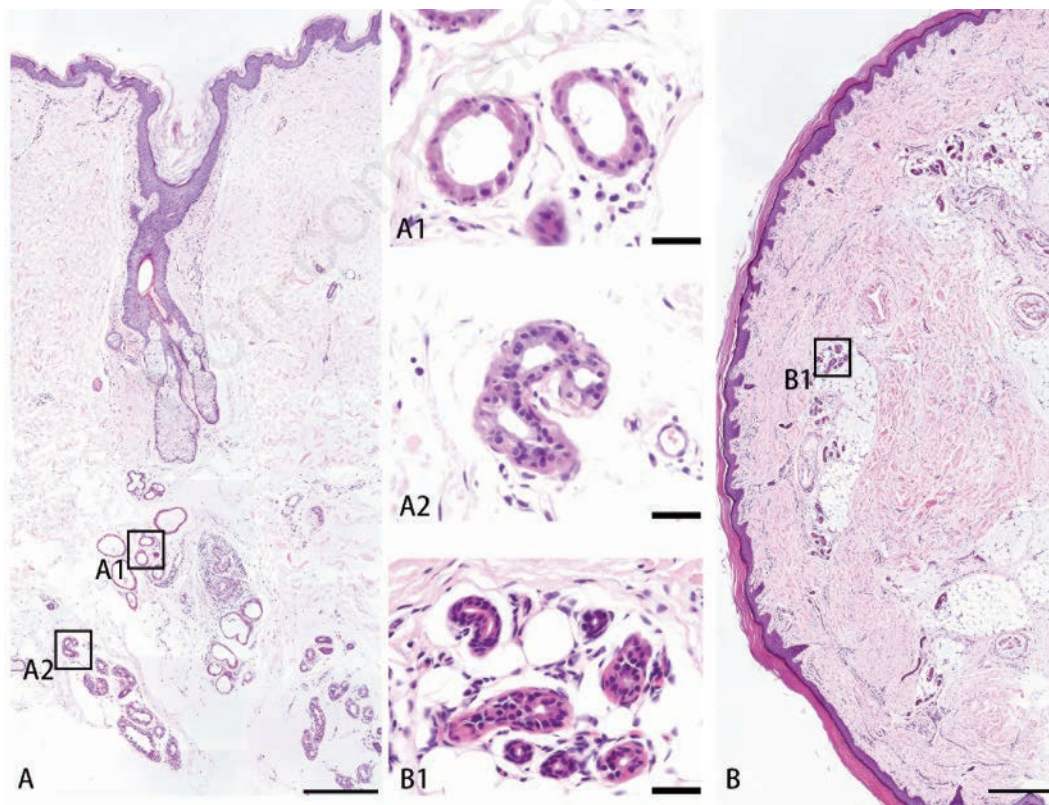
MUC-1 (Figure 4A1-3) was expressed in cell membrane, GCDFP-15 (Figure 4B1-3), K7 (Figure 4C1-3), K18 (Figure 4D1-3) and K19 (Figure 4E1-3) were expressed in cytoplasm, and

Foxa1 (Figure 4F1-3) were expressed in nucleus. Both apocrine sweat glands (Figure 4A1-F1) and eccrine sweat glands (Figure 4A2-F2, A3-F3) were labelled by MUC-1 (Figure 4A1-3; Table 2), GCDFP-15 (Figure 4B1-3; Table 2), K7 (Figure 4C1-3; Table 2), K18 (Figure 4D1-3; Table 2), K19 (Figure 4E1-3; Table 2) and Foxa1 (Figure 2F1-3; Table 2).

**Table 2.** Localization of antigens in human apocrine sweat glands and eccrine sweat glands.

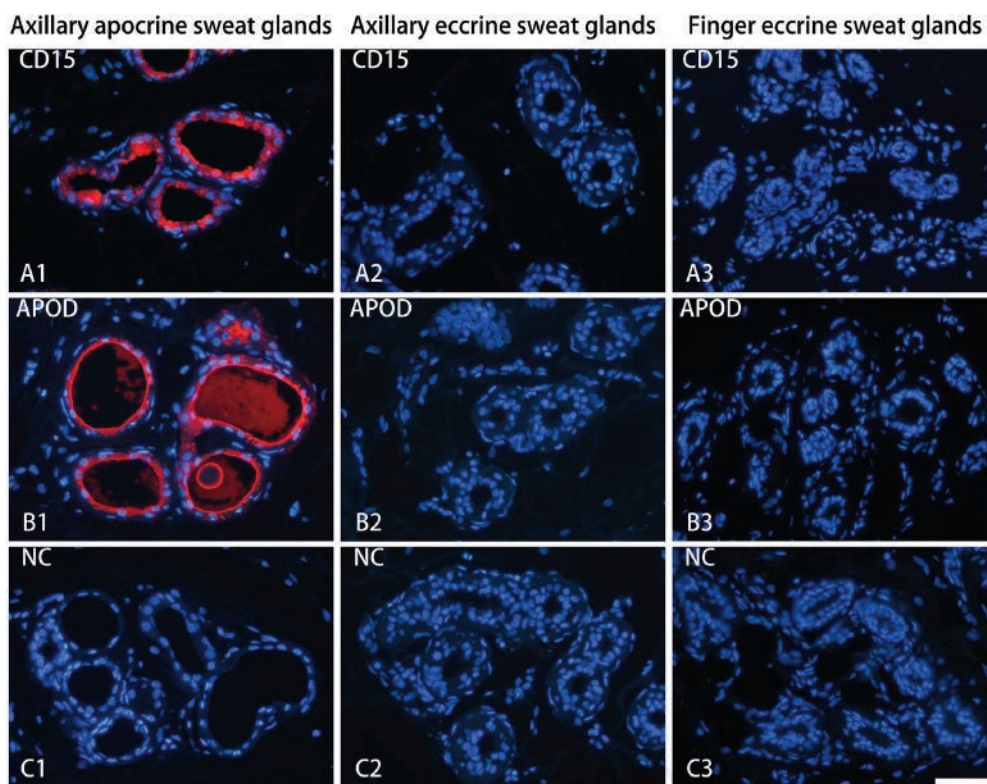
Antigen	Apocrine sweat glands	Eccrine sweat glands
CD15	+	-
APOD	+	-
CAII	-	+
NKCC1	-	+
En1	-	+
MUC-1	+	+
GCDFP-15	+	+
K7	+	+
K18	+	+
K19	+	+
Foxa1	+	+

+, expressed; -, not expressed;

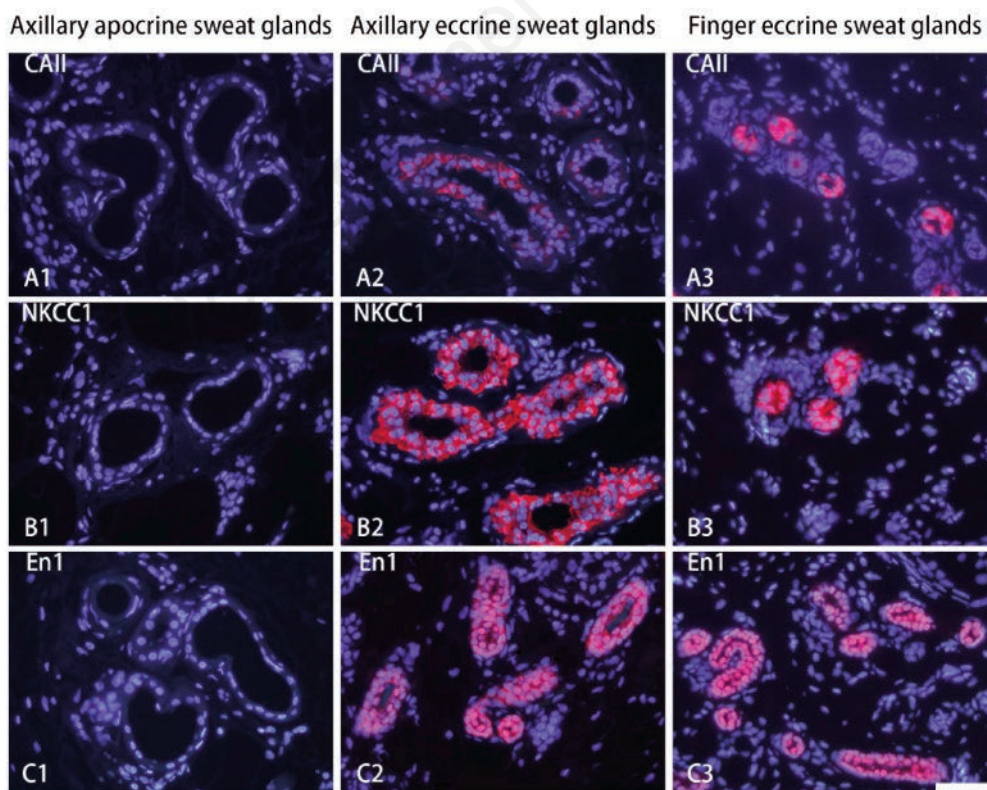


**Figure 1.** The morphology and distribution of eccrine sweat glands and apocrine sweat glands in axillary skin and finger skin. Eccrine sweat glands and apocrine sweat glands in the axillary skin after H&E staining (A, A1, A2). A higher magnification of apocrine sweat glands (A1) and eccrine sweat glands (A2) in the boxed areas in A. Eccrine sweat glands in the finger skin after H&E staining (B,B1). A higher magnification of eccrine sweat glands in the boxed areas in B (B1). Scale bars: 50  $\mu$ m.





**Figure 2.** Specific markers for apocrine sweat glands. Immunofluorescence staining for CD15 (A1-3), APOD (B1-3) and Negative control (C1-3) in axillary apocrine sweat glands (A1-C1), axillary eccrine sweat glands (A2-C2), and finger eccrine sweat glands (A3-C3). APOD, apolipoprotein D; NC, negative control. Scale bar: 50  $\mu$ m.



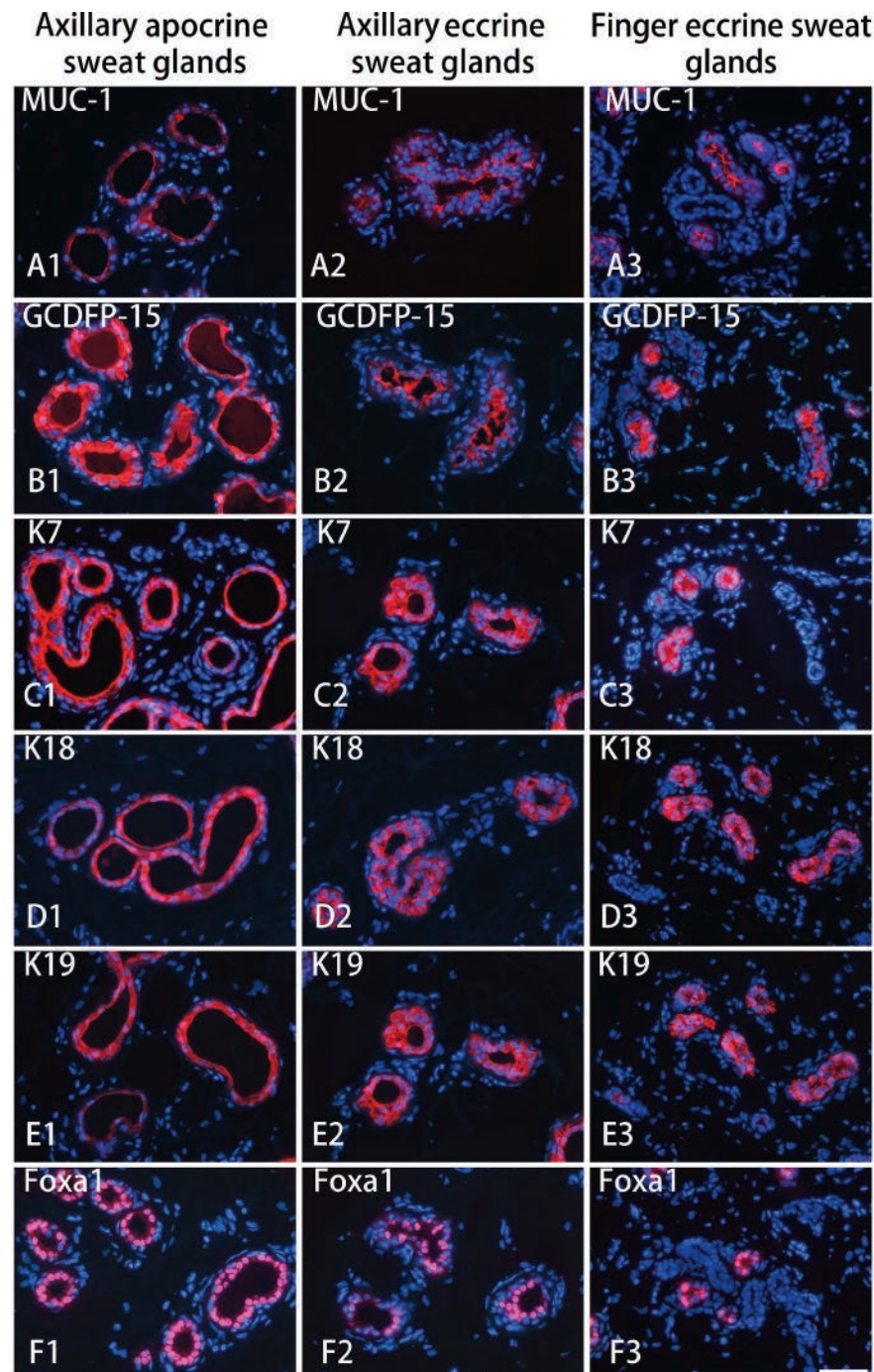
**Figure 3.** Specific markers for eccrine sweat glands. Immunofluorescence staining for CAII (A1-3), NKCC1 (B1-3) and En1 (C1-3) in axillary apocrine sweat glands (A1-C1), axillary eccrine sweat glands (A2-C2), and finger eccrine sweat glands (A3-C3). CAII, carbonic anhydrase II; NKCC1, Na<sup>+</sup>-K<sup>+</sup>-2Cl<sup>-</sup> cotransporter 1; En1, engrailed 1. Scale bar: 50  $\mu$ m.

## Discussion

Some previous studies have reported the differential antigens between eccrine sweat glands and apocrine sweat glands, but most of these antigens are not true differential antigens, so they cannot be used to distinguish between eccrine sweat glands and apocrine sweat glands. In this study, the expression of a series of antigens in finger skin and axillary skin were detected by immunofluorescence

staining to find specific markers that can differentiate eccrine sweat glands from apocrine sweat glands.

Keratins are the major structural proteins of the epidermis and provide specific markers to differentiate different epithelial cell types.<sup>13,14</sup> K7, K18, and K19 are reported to be specific markers for eccrine sweat glands, so we examined their expression in apocrine and eccrine sweat glands.<sup>15-19</sup> The results showed that K7, K18 and K19 were positively expressed in eccrine sweat glands and apoc-



**Figure 4.** Common markers of apocrine sweat glands and eccrine sweat glands. Immunofluorescence staining for MUC-1 (A1-3), GCDFP-15 (B1-3), K7 (C1-3), K18 (D1-3), K19 (E1-3) and Foxa1 (F1-3) in axillary apocrine sweat glands (A1-F1), axillary eccrine sweat glands (A2-F2), and finger eccrine sweat glands (A3-F3). GCDFP-15, gross cystic disease fluid protein-15; Foxa1, Forkhead transcription factor  $\alpha 1$ . Scale bar: 50  $\mu\text{m}$ .



rine sweat glands. Therefore, K7, K18 and K19 cannot be used to as specific markers to distinguish between apocrine and eccrine sweat glands. Likewise, Foxa1 had previously been shown to be expressed in the secretory coils of eccrine sweat glands and involved in eccrine sweat gland development.<sup>20,21</sup> The immunofluorescence staining in our study shows that Foxa1 was negatively expressed in epidermis, hair follicles and sebaceous glands (*data not shown*), and positively expressed in the secretory coils of apocrine and eccrine sweat glands. Therefore, Foxa1 can be used a specific marker for skin sweat glands, but it is not the desired makers for distinguishing eccrine sweat glands and apocrine sweat glands.

GCDFP-15, also known as BRST-2, is considered a marker of apocrine differentiation.<sup>22,23</sup> However, some studies had shown that GCDFP-15 expression was also present in eccrine sweat glands, ceruminous glands and Moll's glands.<sup>24,25</sup> In our study, immunofluorescence staining showed that GCDFP-15 was expressed in both apocrine and eccrine sweat glands. Combined with previous studies, GCDFP-15 may be more suitable as a marker for glandular differentiation, rather than a specific marker for distinguishing apocrine and eccrine sweat glands. MUC1 is constitutively expressed in the epithelial cells.<sup>26</sup> It was previously considered to be an apocrine marker that distinguishes apocrine sweat glands from eccrine sweat glands, because human milk fat globule membranes-1 (HMFG-1), a monoclonal antibody detecting the fully glycosylated MUC1, stained only apocrine sweat glands but not eccrine sweat glands.<sup>26</sup> However, in our study, MUC1 was positively expressed not only in apocrine sweat glands, but also in eccrine sweat glands. Therefore, MUC-1 is not the specific marker that we are looking for to differentiate between apocrine and eccrine sweat glands.

CAII is a cytoplasmic enzyme that catalyzes the reversible conversion of carbon dioxide and water into carbonic acid, protons and bicarbonate ions, and NKCC1 is an ion transport protein that transport Na, K, and Cl ions inside or outside the cells.<sup>27,28</sup> CAII had been used as a specific marker for clear secretory cells of eccrine sweat glands, and NKCC1 had been used as a specific marker for eccrine sweat glands to distinguish eccrine sweat glands from hair follicles.<sup>15,29</sup> In our study, CAII and NKCC1 were expressed in eccrine sweat glands, but not in the apocrine sweat glands, which was consistent with the study by Bovell *et al.*<sup>30</sup> En1, a member of the homeobox transcription factor family, is a marker of eccrine sweat glands and is involved in the development of eccrine sweat glands.<sup>23,31</sup> Ectopic expression of En1 in the hair follicle placodes promoted the differentiation of hair follicle into eccrine sweat glands.<sup>17</sup> En1 heterozygote mutant mice showed less eccrine sweat glands.<sup>31</sup> A previous study by Miura *et al.* showed that En1 was specifically expressed in normal eccrine sweat glands and eccrine differentiated tumors, but not in apocrine sweat glands, sebaceous glands and hair follicles.<sup>23</sup> In our study, the positive nuclear staining for En1 was found in eccrine sweat glands, but negative in apocrine sweat glands, which was consistent with the study by Miura *et al.*<sup>23</sup> Therefore, En1, NKCC1 and CAII can be used as specific markers for eccrine sweat glands to distinguish eccrine sweat glands from apocrine sweat glands.

The glycan determinant CD15, also known as stage specific embryonic antigen 1 (SSEA-1), have originally identified as a monocyte cell marker.<sup>32,33</sup> Previous studies had shown that CD15 is only expressed in apocrine sweat glands but not in the eccrine sweat glands.<sup>12,30,34,35</sup> APOD is an extracellular glycoprotein of the lipocalin family involved in lipid transport, food intake and development.<sup>36</sup> A previous study showed that APOD was expressed in the apocrine sweat glands of patients with bromhidrosis and healthy subjects, but the expression level of APOD in patients with bromhidrosis was twice that of healthy subjects.<sup>37</sup> In our study, CD15 and APOD were only expressed in the apocrine sweat glands. Therefore, CD15 and APOD can be used as specific mark-

ers for apocrine sweat glands to distinguish apocrine sweat glands from eccrine sweat glands.

In conclusion, CD15 and APOD can be used as specific markers for apocrine sweat glands, whereas NKCC1, CAII and En1 can be as specific markers for eccrine sweat glands to distinguish between eccrine and apocrine sweat glands.

## References

- Beer GM, Baumüller S, Zech N, Wyss P, Strasser D, Varga Z, et al. Immunohistochemical differentiation and localization analysis of sweat glands in the adult human axilla. *Plast Reconstr Surg* 2006;117:2043-9.
- Bragança GMG, Lima SO, Neto AFP, Marques LM, Melo EV, Reis FP. Evaluation of anxiety and depression prevalence in patients with primary severe. *An Bras Dermatol* 2014; 9:230-5.
- Shinaoka A, Nakahara R, Saeki M. The use of 33 MHz ultrahigh-frequency ultrasonography for the evaluation of sweat glands in the axilla with osmidrosis. *PLoS One* 2021;16:e0251600.
- Bang YH, Kim JH, Paik SW, Park SH, Jackson IT, Lebeda R. Histopathology of apocrine bromhidrosis. *Plast Reconstr Surg* 1996;98: 88-92.
- Lonsdale-Eccles A, Leonard N, Lawrence C. Axillary hyperhidrosis: eccrine or apocrine? *Clin Exp Dermatol* 2003;28:2-7.
- Semkova K, Gergovska M, Kazandjieva J, Tsankov N. Hyperhidrosis, bromhidrosis, and chromhidrosis: Fold (intertriginous) dermatoses. *Clin Dermatol* 2015;33:483-91.
- Lu C, Fuchs E. Sweat gland progenitors in development, homeostasis, and wound repair. *Cold Spring Harb Perspect Med* 2014;4:1-17.
- Sato K, Kang WH, Saga K, Sato KT. Biology of sweat glands and their disorders. I. Normal sweat gland function. *J Am Acad Dermatol* 1989;20:537-63.
- Borowczyk-Michalowska J, Zimolag E, Konieczny P, Chrapusta A, Madeja Z, Drukala J. Stage-specific embryonic antigen-4 (SSEA-4) as a distinguishing marker between eccrine and apocrine origin of ducts of sweat glands. *J Invest Dermatol* 2017;137:2437-40.
- Lin Y, Chen L, Zhang M, Xie S, Du L, Zhang X, et al. Eccrine sweat gland and its regeneration: Current status and future directions. *Front Cell Dev Biol* 2021;9:1-12.
- Fuchs E. Epithelial skin biology: Three decades of developmental biology, a hundred questions answered and a thousand new ones to address. *Curr Top Dev Biol* 2016;116:357-74.
- Wilke K, Wepf R, Keil FJ, Wittern K-P, Wenck H, Biel SS. Are sweat glands an alternate penetration pathway? Understanding the morphological complexity of the axillary sweat gland apparatus. *Skin Pharmacol Physiol* 2006;19:38-49.
- Wang F, Ziemann A, Coulombe PA. Skin keratins. *Methods Enzymol* 2016;568:303-50.
- Fuchs E. Keratins and the skin. *Annu Rev Cell Dev Biol* 1995;11:123-54.
- Cao L, Chen L, Li H, Wei Z, Xie S, Zhang M, et al. Differential antigen expression between human eccrine sweat glands and hair follicles/pilosebaceous units. *J Mol Histol* 2019;50:335-42.
- Hu T, Xu Y, Yao B, Fu X, Huang S. Developing a novel and convenient model for investigating sweat gland morphogenesis from epidermal stem cells. *Stem Cells Int* 2019;2019:4254759.
- Lu C P, Polak L, Keyes B E, Fuchs E. Spatiotemporal antagonism in mesenchymal-epithelial signaling in sweat versus hair fate decision. *Science* 2016;354:aah61021-12.

18. Li H, Zhou G, Fu X, Zhang L. Antigen expression of human eccrine sweat glands. *J Cutan Pathol* 2009;36:318-24.
19. Cui C, Schlessinger D. Eccrine sweat gland development and sweat secretion. *Exp Dermatol* 2015;24:644-50.
20. Li H, Chen L, Zhang M, Zhang B. Foxa1 gene and protein in developing rat eccrine sweat glands. *J Mol Histol* 2017;48:1-7.
21. Cui C, Childress V, Piao Y, Schlessinger D. Forkhead transcription factor FoxA1 regulates sweat secretion through Bestrophin 2 anion channel and Na-K-Cl cotransporter 1. *Proc Natl Acad Sci USA* 2012;109:1199-203.
22. Darrow E, Haagensen J, Dilley W G, Samuel A, Wells J. Review of GCDFP-15. An apocrine marker protein. *Ann N Y Acad Sci* 1990;586:161-73.
23. Miura K, Akashi T, Ando N, Ayabe S, Kayamori K, Namiki T, et al. Homeobox transcriptional factor engrailed homeobox 1 is expressed specifically in normal and neoplastic sweat gland cells. *Histopathology* 2018;72:1199-208.
24. Viacava P, Naccarato A G, Bevilacqua G. Spectrum of GCDFP-15 expression in human fetal and adult normal tissues. *Virchows Arch* 1998;432:255-60.
25. Saga K. Histochemical and immunohistochemical markers for human eccrine and apocrine sweat glands: an aid for histopathologic differentiation of sweat gland tumors. *J Invest Dermatol Symp Proc* 2001;6:49-53.
26. de Viragh PA, Szeimies RM, Eckert F. Apocrine cystadenoma, apocrine hidrocystoma, and eccrine hidrocystoma: three distinct tumors defined by expression of keratins and human milk fat globulin I. *J Cutan Pathol* 2006;24:249-55.
27. Haas M, Forbush B, III. The Na-K-Cl cotransporter of secretory epithelia. *Annu Rev Physiol* 2000;62:515-34.
28. Hassan M I, Shajee B, Waheed A, Ahmad F, Sly W S. Structure, function and applications of carbonic anhydrase isozymes. *Bioorg Med Chem* 2013;21:1570-82.
29. Li H, Chen L, Zhang M, Zhang B. Cells in 3D-reconstituted eccrine sweat gland cell spheroids differentiate into gross cystic disease fluid protein 15-expressing dark secretory cells and carbonic anhydrase II-expressing clear secretory cells. *Acta Histochem* 2017;119:620-3.
30. Bovell DL, MacDonald A, Meyer BA, Corbett AD, MacLaren WM, Holmes SL, et al. The secretory clear cell of the eccrine sweat gland as the probable source of excess sweat production in hyperhidrosis. *Exp Dermatol* 2011;20:1017-20.
31. Kamberov YG, Karlsson EK, Kamberova GL, Tabin CJ. A genetic basis of variation in eccrine sweat gland and hair follicle density. *Proc Natl Acad Sci USA* 2015;112:9932-7.
32. Gadhoun S Z, Sackstein R. CD15 expression in human myeloid cell differentiation is regulated by sialidase activity. *Nat Chem Biol* 2008;4:751-7.
33. Pellegrini W, Bresciani G, Zorzi A D, Marocolo D, Ungari M, Facchetti F. MMA monoclonal antibody is a superior anti-CD15 reagent for the diagnosis of classical Hodgkin's lymphoma. *Haematologica* 2007;92:708-9.
34. Ansai S, Koseki S, Hozumi Y, Kondo S. An immunohistochemical study of lysozyme, CD-15 (Leu M1), and gross cystic disease fluid protein-15 in various skin tumors. Assessment of the specificity and sensitivity of markers of apocrine differentiation. *Am J Dermatopathol* 1995;17:249-55.
35. Bovell DL, Corbett AD, Holmes S, MacDonald A, Harker M. The absence of apoecrine glands in the human axilla has disease pathogenetic implications, including axillary hyperhidrosis. *Br J Dermatol* 2007;156:1278-86.
36. Rassart E, Desmarais F, Najyb O, Bergeron K-F, Mounier C. Apolipoprotein D. *Gene* 2020;756:144874.
37. Chen H, Yang G, Li Y, Li X, Du J. Expression of apolipoprotein D and androgen receptor in axillary osmidrosis and its molecular mechanism. *Int J Clin Exp Med* 2013;6:497-503.

Received for publication: 18 September 2022. Accepted for publication: 29 November 2022.

This work is licensed under a Creative Commons Attribution-NonCommercial 4.0 International License (CC BY-NC 4.0).

©Copyright: the Author(s), 2023

Licensee PAGEPress, Italy

*European Journal of Histochemistry* 2023; 67:3559

doi:10.4081/ejh.2023.3559

*Publisher's note: All claims expressed in this article are solely those of the authors and do not necessarily represent those of their affiliated organizations, or those of the publisher, the editors and the reviewers. Any product that may be evaluated in this article or claim that may be made by its manufacturer is not guaranteed or endorsed by the publisher.*