

Erratum - Transcription factor nuclear factor erythroid 2 p45-related factor 2 (NRF2) ameliorates sepsis-associated acute kidney injury by maintaining mitochondrial homeostasis and improving the mitochondrial function

Zhijiang Chen,¹ Huili Wang,² Bin Hu,¹ Xinxin Chen,¹ Meiyu Zheng,¹ Lili Liang,¹ Juanjuan Lyu,³ Qiyi Zeng¹

¹Department of Pediatrics, Zhujiang Hospital, Southern Medical University, Guangzhou, Guangdong

²Department of Laboratory, Guangdong Women and Children Hospital, Guangzhou, Guangdong

³Department of Pediatrics, West China Second University Hospital, Sichuan University, Chengdu, Sichuan

ERRATUM

This corrects the article published in *European Journal of Histochemistry* 2022;66:3412, in which we discovered some errors in Figure 1 and Figure 3.

To better report the results, Figure 1 has been replaced by an immunofluorescence diagram, and the sorting in Figure 1 has been adjusted.

The wrong Nucleus NRF2 Western blot band is used in Figure 3B, which needs to be corrected.

The correct Figure 1 and Figure 3 and relevant legends are shown below.

Correspondence: Dr. Qiyi Zeng, Department of Pediatrics, Zhujiang Hospital, Southern Medical University, Guangzhou 510280, Guangdong, China. Tel. +86.13380091023 - Fax: +86.20.61643371.
E-mail: zqy__88@163.com

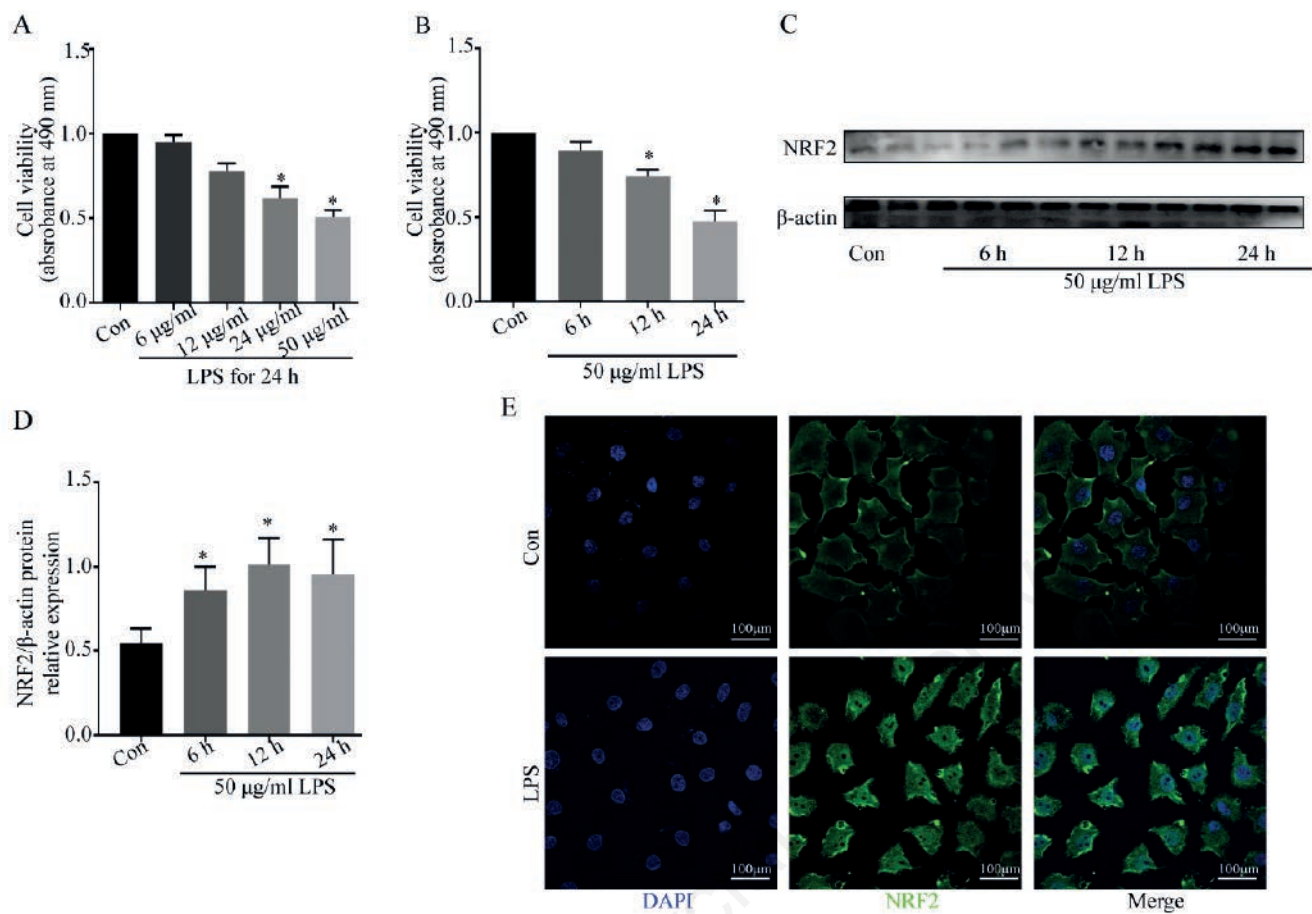


Figure 1. Effect of LPS on NRF-2 activation in NRK-52e cells. A) Cell viability after addition of 6-50 µg/mL LPS for 24 h (n=5). B) Cell viability after addition of 50 µg/mL LPS for 6-24 h (n=5). C) Western blots showing NRF2 expression in cells at 6, 12, and 24 h after addition of LPS (50 µg/mL). D) Quantitative analysis of the Western blot data, with expression relative to β-actin (n=3). E) Immunofluorescence detection of the expression and distribution of NRF2 following LPS treatment. Data are presented as means ± SD; *p<0.05 vs control.

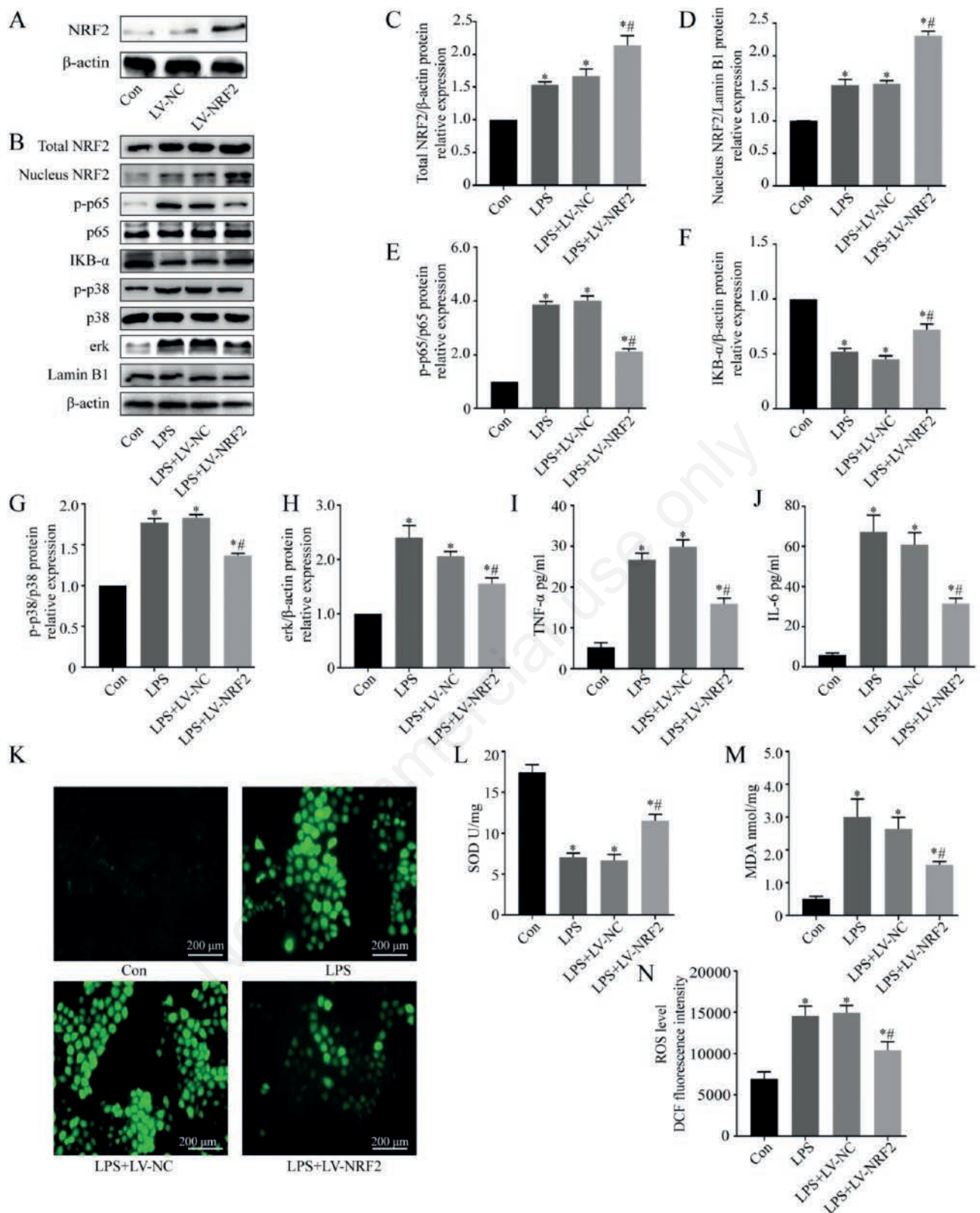


Figure 3. Effect of NRF2 on the inflammatory response and oxidative stress in LPS-induced injury of NRK-52e cells. A) Immunoblotting of NRF2 following transfection with LV-NRF2. B) Western blotting of NRF2, Nucleus NRF2, p-p65, IKB- α , p-p38 and erk. C) Quantitative analysis of the Western blotting data, with expression relative to β -actin, p65, p38 or Lamin B1 (n=3). D, E) ELISA of TNF- α and IL-6 in cell culture supernatants (n=5). F) SOD activity (n=5). G) MDA level (n=5). H) Representative fluorescence microscopy images of ROS production (DCFH-DA probe). I) Quantitative analysis of the ROS data (n=5). Data are presented as means \pm SD; *p<0.05 vs control, #p<0.05 vs LPS.